



Cardiff
Metropolitan
University

Prifysgol
Metropolitan
Caerdydd



Undergraduate

Handbook

BSc (Hons) Computing with Creative Design

Cardiff School of Technologies



Contents

Introduction	2
Essential Information	4
Meet the Team	6
Welcome Week	7
Useful Information	12



Introduction

Welcome to Cardiff Metropolitan University!

WELCOME FROM YOUR PROGRAMME DIRECTOR

A very big welcome to Cardiff Metropolitan University and the Cardiff School of Technologies!

The programme team and I are pleased you have chosen to spend the next few years studying with us and we are confident that you will have an enjoyable and fulfilling experience.



The programme team are on hand to help you make the most from your time at Cardiff Metropolitan University.

As Your Programme Director I will be responsible for the academic and administrative coordination of the course.

As a new student at Cardiff Met you will be assigned a Personal Tutor who will provide support throughout your time here. If you have any concerns or questions before you arrive, please contact me directly.

This welcome pack has been written to get you thinking about your chosen course and to let you know a little bit about your first week at university. In addition, we have provided some resources for those students who are looking to undertake some preparatory study.

During the induction Week, you will have the opportunity to meet your fellow students, lecturers, and personal tutor. In addition, you will learn more about Cardiff Met, our campus, and the city. We hope you find the week informative and enjoyable.



We are looking forward to meeting you soon!

J. Pinney

Joel Pinney (jpinney2@cardiffmet.ac.uk)

Programme Director Computing with Creative Design

Lecturer In Computer Science and/or Games Development.



Essential Information

Programme Details

The programme aims to provide students with both the technological and creative skills for developing human-centric designs to tackle modern day technology challenges. In particular to foster students' development within Computing with a particular focus on developing creative and user centred approaches. The programme equips students to be able to apply a range of human-computer interaction and user centred designs in a variety of scenarios tailored to industry expectations. Additionally, the programme aims to equip students with the knowledge and skills to gain employment in the IT sector in a variety of settings, with particular focus on creativity and design.

Part-Time Students

Whilst full-time students should participate in everything, we recognise you may not be able to do so because of other commitments, and we understand this.

Talk with your Personal Tutor about which activities will be most valuable for you. You will be welcome to join in all events during the week as and when you can. Do, though, ensure that you have registered and completed the required paperwork before attending any events.

International Students

We understand that for international students coming to the UK, adjusting to a new culture, finding somewhere suitable to live, and following new processes and procedures can be quite overwhelming. The Global Student Advisory Service is available to offer friendly advice and support to all international students in relation to welfare concerns, academic skills, and immigration matters. For more information about the services available, access the links below:



Global Student Advisory Support

[Global Student Advisory Service International Welfare Advice](#)

[Global Student Advisory Service International Academic Advice](#)

[Global Student Advisory Service Immigration Advice](#)

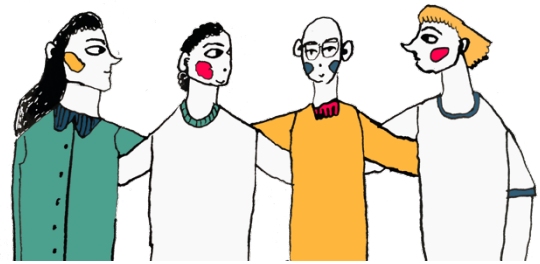
Global Student Advisory Contacts

Welfare advice – intstudentadvice@cardiffmet.ac.uk

It is also important that you attend the activities planned for your course during Welcome Week so you get to meet your Programme Director, Tutors, and the rest of your cohort. This will help you to settle into your new environment and make new friends.



Meet the Team



Joel Pinney (jpinney2@cardiffmet.ac.uk)

**Programme Director Computing with
Creative Design**

Modules to be studied in Academic Year 23/24.

Confirmed Module Leader details will be provided towards the start of term. For more information on our CST teaching staff and their specialised areas please visit [the website](#).

CRE4000	Design Thinking (Term 1)
SEN4000	Principles of Programming (Term 1)
IST4000	Explore (Year-Long)
CRE4002	Human Computer Interaction (Term 2)
IST4001	Technology and Society (Term 2)
SEN4001	Web Design and Databases (Term 2)



Welcome Week

What to expect

During the week you will complete a project, which you will undertake with a group of other new students from your programme, supported by staff and current students who are on your programme. There will also be lots of help from the other university services, showing some great tools and techniques you can use to make your project a success.



At the end of the week we will also give you some feedback on the strengths of your group's approach, sharing and celebrating what we have discovered together.

There will be an introduction to your new School and Programme and lots of fun activities to help you meet new people.

You will need to complete a bit of administration and check-in with your programme, so we know who is doing what, and when. You will also need to complete any outstanding enrolment matters, pick up Students' Union cards, and touch base with any specialised support services that you need.

Here's what Cardiff Met students enjoyed about Welcome Week

"Helped me settle in and took the pressure off travelling to a new place"

"The group projects to find out about our peers was a nice way of getting to know everyone"

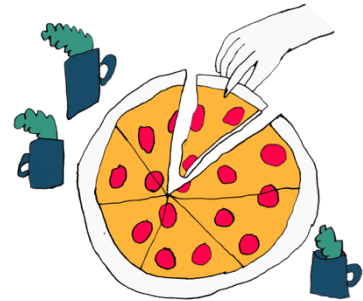
"Helpful to chat informally to the Programme Director and chat about random things to help settle in".



Programme Activities and Projects

Task

During your degree, you will be exploring the interaction between humans and technology. As technology continues to advance the requirement to consider human focused designs increases. As part of this task, you are required to explore how we might consider improving current or preparing for future technology designs.



Select any piece of hardware or software (this might be a particular technology that you have had issues with) and begin to consider the issues surrounding your interaction with this technology.

Once you have the piece of technology in mind consider the following:

- What is the piece of technology and why have you selected it?
- What are the core problems with this technology?
- Are there any specific user focused issues that you can find? (i.e., issues that would influence a humans' interaction with the technology?)
- Are there any steps that can be taken to improve this interaction?
- If you were to redesign this technology, what changes would you make?
- What are the core considerations that must be made when developing the future of technology to ensure the end users remains the focus?

Create a rough plan detailing the types of steps and considerations you would make to improve your piece of technology selected.

Social Activities

Further information on social activities will be available in your induction week timetable, which will be provided closer to the start of term.



Freshers' Fayre

The Freshers' Fayre, organised by the [Students' Union](#), is your first chance to meet all our [SU Societies](#), [SU Sports Teams](#) and, of course, a chance to grab all manner of freebies from our commercial partners! The fayre is an all-day event taking place on Wednesday within NIAC on the Cyncoed campus! It is one of the highlights of the Freshers calendar and one of the only times during your university journey that every student from all Cardiff Met Schools will be in the same place!

Head over to the [Cardiff Met Students' Union website](#) for up-to-date information on events, societies, support and more.



Welcome Week Activities

During Welcome Week you will have the opportunity to:

- Attend a welcome meeting with your Programme Director and meet the team, where they will provide an introduction and outline expectations.
- Meet other students on your programme of study.
- Meet your Personal Tutor. *
- Take part in a welcome week project with other students on your programme of study and present the findings from your project to staff and peers.
- Familiarise yourself with the campus.
- Explore what services are available to support you on your learner journey.
- Attend Fresher's Fayre on Wednesday.
- Familiarise yourself with the digital tools you will be expected to use during your studies.
- Take part in a 'wrap up' session, reflect on the week and make sure you know what your timetable is looking like for the first week of teaching.
- Attend the Cardiff Met celebration event on Friday afternoon.

Please note you will find a detailed timetable for your programme of study on the Welcome Week site.

*If you would like to request a Welsh speaking Personal Tutor, please contact the School as soon as possible and we will do our best to accommodate your request. Contact email: CSTAdministration@cardiffmet.ac.uk



Personal Welcome Week Checklist



During Welcome Week you need to make **sure** that you have:

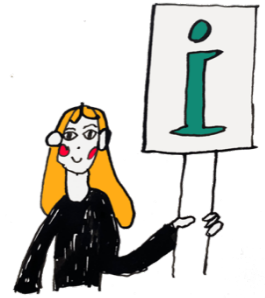
- Completed the enrolment process.
- Collected your student ID card.
- Attended programme activity sessions.
- Attended some social events on campus/online.
- Attended Fresher's Fayre
- Met with your Personal Tutor
- Familiarised yourself with the library and any support services you might need
e.g. Dyslexia or Disability help



Useful Information

New Students Information

The [Course Joining Information website](#) has lots of useful information to help with your planning. Simply select your level of entry on the website to find out more and access your important joining information.



Student Services

[Student Services](#) provide support and guidance, including mental health, disability support, careers advice, information on part-time jobs and money management.

SU Welcome Guide

An interactive guide to help you navigate your journey into and throughout your university life. Take the tour and enjoy each section designed to help you get to know Cardiff Met.

[What you need to know before you go](#)

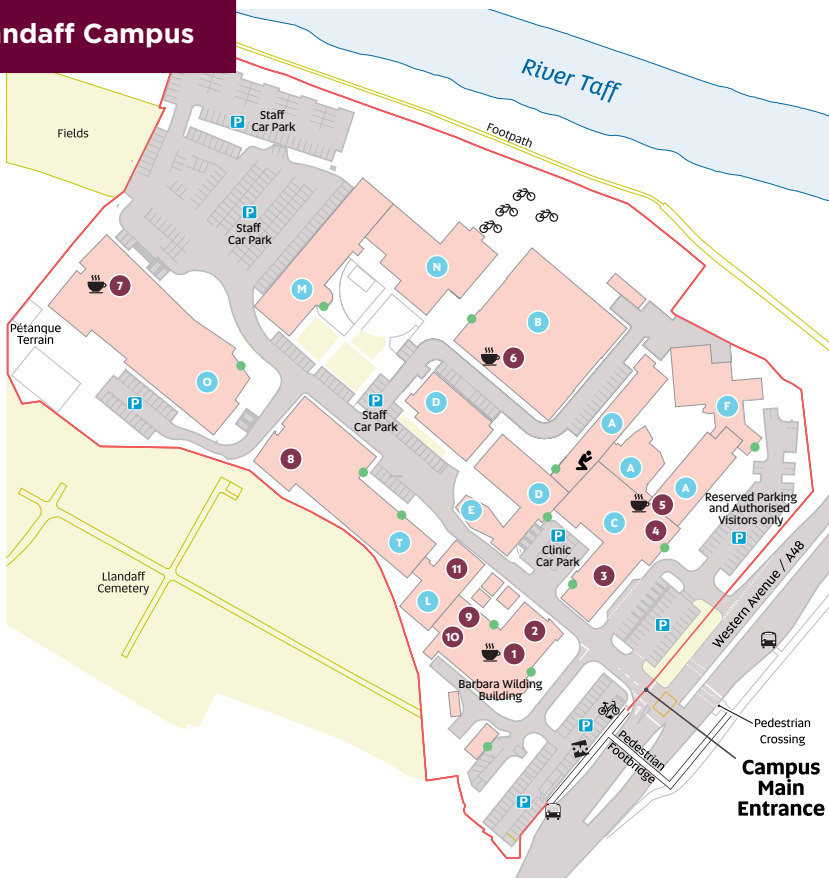


Academic Calendar 2023/24

[Academic Calendar 2023/2024](#)



Llandaff Campus



Key

- | | | |
|------------------------------|----------------------------------|---------------------------|
| 1 The Hub | 8 IT Help Desk (First Floor) | P Parking |
| 2 Gym (First Floor) | 9 The Global Lounge | 🚲 Electric Bikes |
| 3 Podiatry Clinic | 10 Students' Union (First Floor) | 🚲 OVO Bikes |
| 4 Main Reception & i-Zone | 11 Learning Centre | 🚲 Bike Rack |
| 5 The Gallery (First Floor) | ● Building letter | 🚰 Bus Stop |
| 6 The Box Café (First Floor) | ● Building Main Entrance | ☕ Café |
| 7 The Atrium | | 🕌 Multi-faith prayer room |

All our rooms use the same naming formula – *Building Floor . Room Number*. So if you're looking for 01.18, go to building O, climb to the first floor, and find room number 18. Or for B0.10 go to building B, stay on the ground floor and look for room 10. In the naming formula, 'LL' refers to Llandaff.



Cardiff
Metropolitan
University

Prifysgol
Metropolitan
Caerdydd

Wythnos groeso
Welcome week

2023