

Welcome Week Handbook

MSc Advanced Computer
Security

Cardiff School of Technologies

Academic year
2023/2024



Cardiff
Metropolitan
University

Prifysgol
Metropolitan
Caerdydd

Contents

Introduction	2
Essential Information	4
Meet the Team	6
Welcome Week	7
Useful Information	12



Introduction

Welcome to Cardiff Metropolitan University

Dear Student,

A big welcome to the 2023-2024 academic year. This is an exciting time for you and hopes you can study in a safe environment. The purpose of this welcome pack is to give you information on your programme and wider University. Please take the time to read this information. If you have any questions, please don't hesitate to contact me.



If you have not already done so, please ensure you have completed your enrolment onto the programme as soon as possible. Please use the [enrolment guide](#) to help you with completing the form. This will allow you to gain access to your Student IT Account and email.

In terms of Hardware and Software you will need to be sure that you can run the appropriate software on your computer at home. Please check your Moodle modules for details of any specific software that you should use on your modules so that you can install it on your home computer. It would be easier for you to make use of your own computer as much as possible to prevent any spread of viruses. Additionally, if you feel that you have any issues with hardware, software or internet access, please let your personal tutor know.

Communication should be done through your university e-mail account and through Teams. Please keep a close eye on your emails and Teams and make sure you read anything sent to you. These are the official communication channels for the University, and it is very important for you to continually check any communication that is sent to you and please check at least once a day and, better yet, set it up on your phone. Your personal e-mail account should not be used.



Induction begins week commencing 22nd January with taught classes starting week commencing 29th January. If you have any questions, please contact using the contact details below. Additionally, School Reps are appointed by the Students' Union (SU) as the figurehead rep for each school. It is their responsibility to recruit and manage the rep structure within the school and to act as a link between the school and SU. They represent students at school and University level. Your School Rep for this academic year can be contacted at CSTRep@cardiffmet.ac.uk.

I look forward to seeing you at the start of term and I hope you're looking forward to starting the academic year with the exciting new changes and a new way of learning.

Dr. Liqaa Nawaf BSc (Hons), MSc Eng, PhD, FHEA.

MSc Programme Director for Advanced Computer Security

Senior Lecturer in Cyber Security

E: LLLNawaf@Cardiffmet.ac.uk



Essential Information

Programme Details



This MSc Advanced Computer Security is a practice-oriented and industry-relevant postgraduate programme of study. Students will be trained to identify vulnerabilities, threats, evaluate risks and design control measures to solve real-world problems; skills which are sought after in both the private and public sector.

This course will equip you with in-demand theoretical knowledge and practical skills to develop secure systems and software, assess and mitigate risks, secure network infrastructure, and manage all aspects of computer security.

We will be teaching your modules over a 12-week semester, with three modules being taught within the first 12 weeks. In addition to this, we will be delivering your modules using a blended style of delivery, where some parts of the modules will be taught on campus, and some will be taught online.

In terms of the sessions that you will be attending, they will be structured in this way:

- **Studios.** These are similar in nature to a lecture, but they will be more interactive and give you more opportunity to engage with the theory and technical aspects of the module. This is a move away from the standard lecture, which had limited opportunity to engage with the lecturer and fellow students.
- **Workshops.** These will be opportunity for you to work in groups, solve problems and work through exercises.

Each of the above sessions will total 2 hours per week. At the time of writing, it is anticipated that one hour of the Studio will be online MS Teams and one hour of the Studios with the two hours of Workshops will be on campus. Timetables will be made available during induction week.

Attendance is expected of you at each session, whether it is online or on campus to attend every class to ensure that you give yourself the best learning experience. Any non-attendance will be recorded, and you will be notified of your lack of engagement.



Part-Time Students

Whilst full-time students should participate in everything, we recognise you may not be able to do so because of other commitments, and we understand this.

Talk with your Personal Tutor about which activities will be most valuable for you. You will be welcome to join in all events during the week as and when you can. Do, though, ensure that you have registered and completed the required paperwork before attending any events.

International Students

We understand that for international students coming to the UK, adjusting to a new culture, finding somewhere suitable to live, and following new processes and procedures can be quite overwhelming. The Global Student Advisory Service is available to offer friendly advice and support to all international students in relation to welfare concerns, academic skills, and immigration matters. For more information about the services available, access the links below:

Global Student Advisory Support

[Global Student Advisory Service International Welfare Advice](#)

[Global Student Advisory Service International Academic Advice](#)

[Global Student Advisory Service Immigration Advice](#)

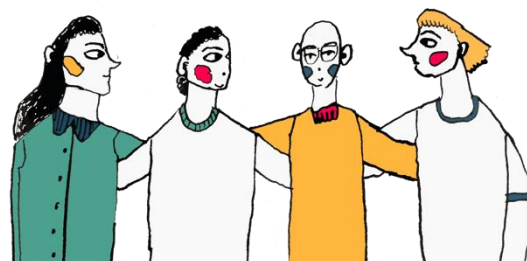
Global Student Advisory Contacts

Welfare advice – intstudentadvice@cardiffmet.ac.uk

It is also important that you attend the activities planned for your programme of study during Welcome Week, so you get to meet your Programme Directors, Tutors, and the rest of your cohort. This will help you to settle into your new environment and make new friends.



Meet the Team



Dr. Liqaa Nawaf BSc (Hons), MSc Eng, PhD, FHEA.
MSc Programme Director for Advanced Computer Security
Senior Lecturer in Cyber Security
E: LLLNawaf@Cardiffmet.ac.uk

Modules to be studied in Academic Year 23/24.

Confirmed Module Leader details will be provided towards the start of term. For more information on our CST teaching staff and their specialised areas please visit [the website](#).

CIS7028	Information Security (Semester 1)
CIS7037	Network Security (Semester 1)
CIS7038	Secure Systems and Software (Semester 1)
CIS7039	Human-Centred Security (Semester 2)
CIS7040	Forensics (Semester 2)
CIS7041	Applied Cryptology (Semester 2)
CIS7016	Research Methods (Semester 1)
CIS7017	Technology Dissertation (Year-long) Dr Chow Siing Sia - Dissertation Co-ordinator



Welcome Week

What to expect

During the week you will have the opportunity to engage in several activities, which you will undertake with a group of other new postgraduate students from your programme, supported by staff and current students

who are on your programme. There will also be lots of help from the other Cardiff Met services showing some great tools and techniques you can use during your post graduate journey.



There will be an introduction to your new school and programme of study and lots of activities to help you meet new people.

You will need to complete a bit of administration and check-in with your programme team, so we know who is doing what, and when. You will also need to complete any outstanding enrolment matters, pick up Students' Union cards, and touch base with any specialised support services that you need.

Here's what Cardiff Met students enjoyed about Welcome Week

"Helped me settle in and took the pressure off travelling to a new place"

"The group activities helped me to find out about our peers was a nice way of getting to know everyone"

"Helpful to chat informally to the Programme Director and chat about random things to help settle in".



Programme Activities and Projects

This project will take place during Induction Week and will develop the skills, knowledge, and experience to face one of the modern world's greatest challenges and opportunities. This project will prepare you for an exciting and rewarding career in cyber security, application and network/software security, ethical hacking and cyber law enforcement and ethical concerns, among others.

The project will equip students with the necessary skills and knowledge to understand, apply and critically evaluate the principles that underpin Cyber Security.

Investigate for a current Cyber Attack scenario and present the work through presentation and provide student with feedback through discussions.

Considering the below terminologies:

- Risk
- Threat and Vulnerabilities
- Forensic
- Access Control/ Security
- Cryptograph

Social Activities

Further information on social activities will be available in your induction week timetable, which will be provided closer to the start of term.



Welcome Week Activities



During Welcome Week you will have the opportunity to:

- Attend a welcome meeting with your Programme Director and meet the team, where they will provide an introduction and outline expectations.
- Meet other postgraduate students.
- Take part in a welcome week activity with other postgraduate students.
- Familiarise yourself with campus.
- Explore what services are available to support you on your learner journey.
- Familiarise yourself with the digital tools you will be expected to use during your studies.
- Take part in a 'wrap up' session, reflect on the week and make sure you know what your timetable is looking like for the first week of teaching.

Personal Welcome Week Checklist

During Welcome Week you need to make sure that you have:



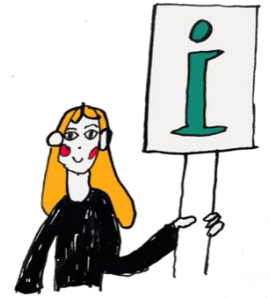
- Completed the enrolment process.
- Collected your student ID card.
- Attended programme activity session.
- Attended some social events on campus/online.
- Attended Freshers' Fayre
- Met with your Programme Director and staff on your programme of study.
- Familiarised yourself with the library and any support services you might need
e.g., Dyslexia or Disability help.



Useful Information

New Students Information

The [Course Joining Information website](#) has lots of useful information to help with your planning. Simply select your level of entry on the website to find out more and access your important joining information.



Student Services

[Student Services](#) provide support and guidance, including mental health, disability support, careers advice, part-time jobs information and money management.

SU Welcome Guide

An interactive guide to help you navigate your journey into and throughout your university life. Take the tour and enjoy each section designed to help you get to know Cardiff Met.

[What you need to know before you go](#)



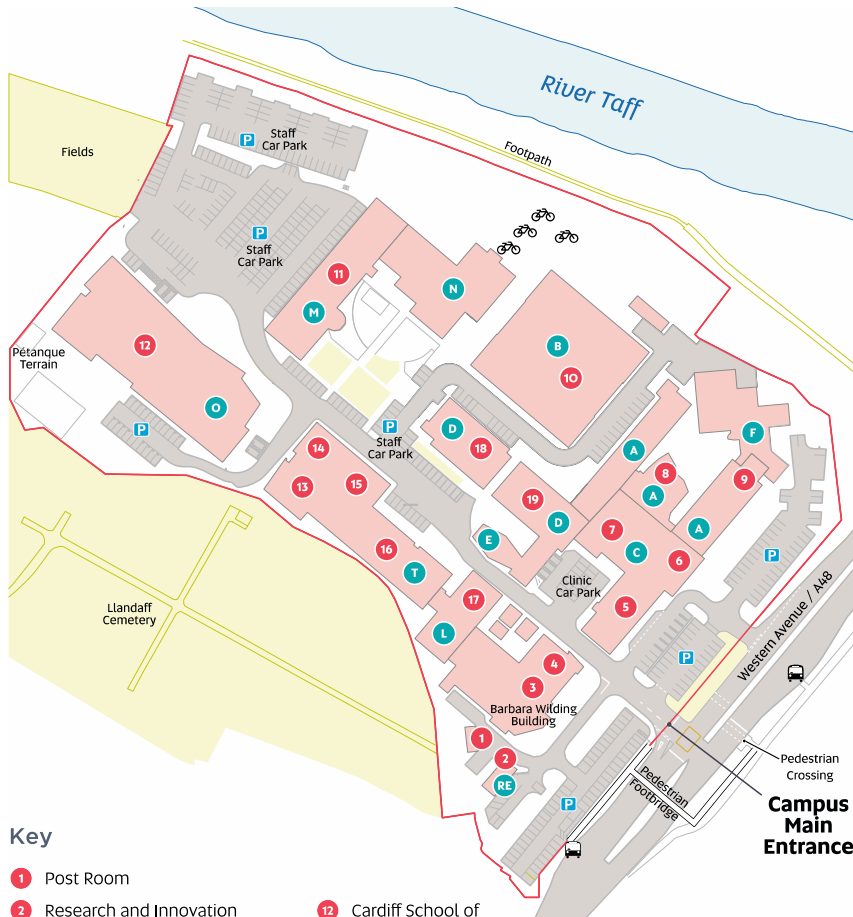
Academic Calendar 2023/24

[Academic Calendar 2023/2024](#)



Campus Map 2

Llandaff Campus



Key

- | | | |
|--|-------------------------------------|--|
| 1 Post Room | 12 Cardiff School of Management CSM | P Parking |
| 2 Research and Innovation | 13 IT Help Desk | 🚲 Bike Rack |
| 3 Student Hub | 14 School of Dental Technology | 🚌 Bus Stop |
| 4 Gym (First Floor) | 15 Global Engagement | 2 · City Circle |
| 5 Podiatry | 16 Biomedical Sciences CSSHS | 15 · Heath Hospital to Central Station |
| 6 Main Reception & i-Zone | 17 Learning Centre | |
| 7 Main Halls | 18 Food Industry Centre FIC | |
| 8 Lecture Theatre AO.31 | 19 School of Health Sciences CSSHS | |
| 9 Cardiff School of Technologies CST | | |
| 10 Cardiff School of Art and Design CSAD | | |
| 11 Maritime House | | |

