

**CARDIFF METROPOLITAN UNIVERSITY
CARDIFF SCHOOL OF SPORT AND HEALTH SCIENCES
ETHICS FRAMEWORK**

Introduction

CSSHS Ethics Structure and Decision Process

Activities Requiring Ethical Approval

How to Apply for Ethical Approval

Undergraduate / PGT applications

Research / Staff / Enterprise

Protocols

Decisions Made by Panels and Committee

Health, Safety and Risk Assessment

Activities Involving Human Participants

Human Materials

Research Requiring Third Party Research Ethics Committee Approval

Appeals and Complaints Procedure

Audit of Approved Projects

Composition of panels

GDPR Compliance and Data Management

Contact Details

Appendix I

Appendix II

Appendix III

Appendix IV

Appendix V

Appendix VI

Appendix VII

Appendix VIII

Introduction

This document outlines the School Ethical Framework for the conduct of learning, teaching, research, innovation and enterprise by staff and students. Any required updates to the document will be made at the start of the academic year. This framework relates specifically to the School of Sport and Health Sciences but is aligned with institution-wide procedures approved by the [University Ethics Committee \(UEC\)](#). The formal UEC terms and conditions for School ethics committees are presented in **Appendix I**.

This framework aims to protect the rights, dignity, health, safety and privacy of staff, students and participants in research and/or enterprise projects. The School also aims to protect the academic freedom of staff and students along with the reputation of the School as a centre for high quality learning, teaching, research, innovation and enterprise.

The policy set out here applies to all Cardiff Met staff and students when they plan to undertake internal or external research, innovative or enterprise projects and/or certain teaching exercises, and is based on the following ethical principles:

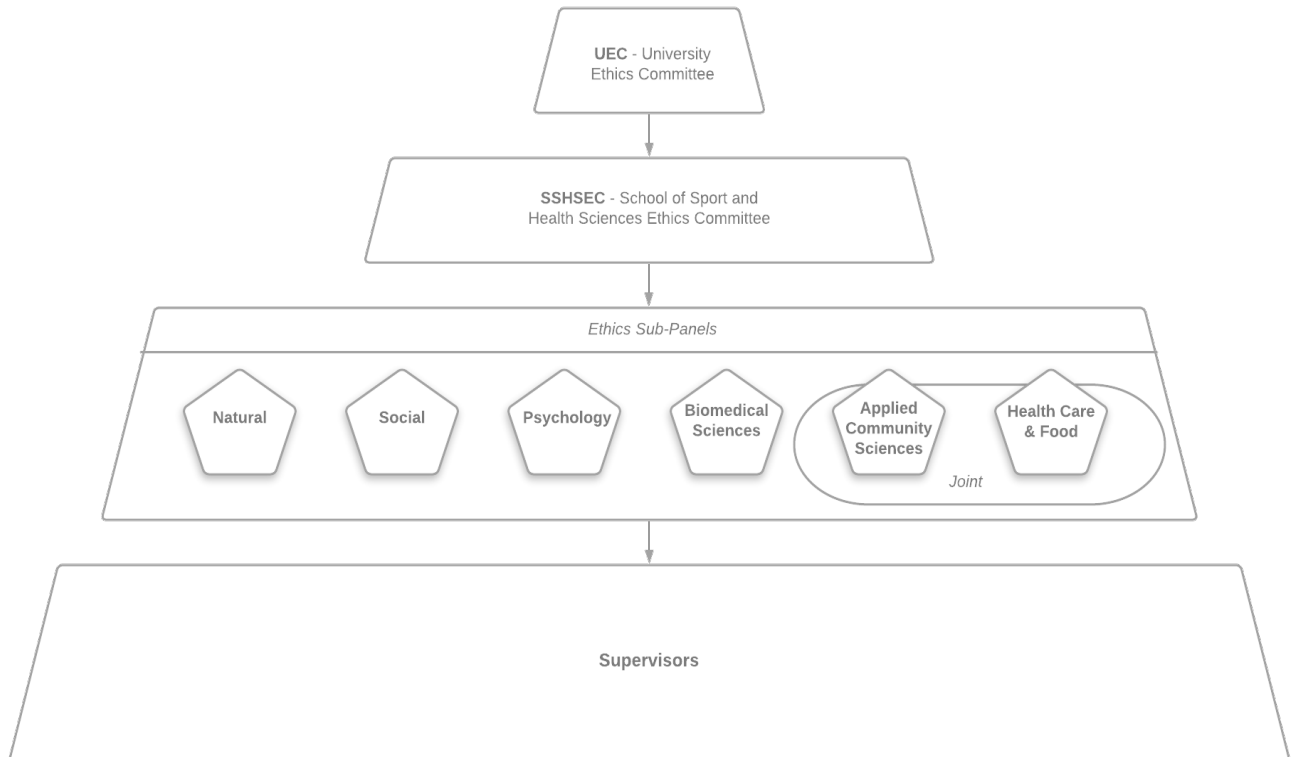
- **Non-maleficence.** Minimise harm to participants, researchers, institution & environment.
- **Beneficence.** Maximise possible benefits and minimise possible harms.
- **Dignity and autonomy** of participants.
- **Confidentiality and anonymity** of participants, where possible.
- **Impartiality** of researchers, where possible.
- **Legal** compliance with UK voluntary and statutory regulation.
- **Non-discriminatory** values and practices.

Studies may also be required to comply with externally developed guidelines, such as in the case of research/enterprise funded by Research Councils (e.g. BBSRC, Arts and Humanities Research, Economic and Social Research Council), Professional Bodies (e.g. British Psychological Society, BASES), Charities (e.g. AMRC, British Heart Foundation) or EU framework programmes.

Applicants are responsible for ensuring that they meet the requirements of external agencies. For links to professional and research council codes of practice applicable to research in the Cardiff School of Sport and Health Sciences (CSSHS) please refer to [Appendix II](#).

CSSH Ethics Structure and Decision Process

The ethics management structure is presented below in **Figure 1**. The School of Sport and Health Sciences Ethics Committee (SSHSEC) is responsible for ensuring that all research, innovation, enterprise and student projects carried out by staff and students conforms to ethical standards set by the School and approved by UEC.



SSHSEC devolves the assessment of all ethics applications to one of six ethics sub-panels (including one joint sub-panel) or the supervisor of the project, depending on the subject matter. The decision process is dictated by a number of factors – these are outlined in [Appendix III](#).

SSHSEC is also responsible for undertaking the audit of ethical decision-making by the panels on an annual basis.

Unless the project involves contentious subject matter then the below can be signed off at Supervisor level:

- Undergraduate
- Postgraduate Taught (including Master of Research)
- Human Studies

An exception to the above would be in cases where the research may be published at a later date. In this case, applications should be referred for panel assessment.

All other applications, and those involving contentious* project content, will need to be considered by the appropriate ethics panel and, if necessary, referred to SSHSEC. This will include:

- All Postgraduate research students
- All staff projects
- All Franchise-based projects (UG, PGT and PGR)

*A contentious project refers to any of the following (see also checklist in [Appendix IV](#)):

- Human Participants:
 - any intervention that is not usually part of normal life or training.
 - administering of substances (e.g. drugs, placebos, vitamins).
 - prolonged or repetitive testing OTHER THAN repetitive training exercises of a type which may form part of a participants' normal activities.
 - sensitive research where a topic area deals with sensitive aspects of participant behaviour, such as sexual behaviour or preference.
 - patients (NHS or private) or vulnerable populations and/or participants who are unable to give informed consent.
- Projects involving children (<18 years old). See [Appendix IV](#).
- All projects involving sampling and/or storage of Human Material.
- Projects involving animals or sampling and/or storage of animal material as defined by the University Policy on working with animals – see [Policy on Work Involving Animals and Animal Material](#) in the [Policy Hub](#).
- Projects involving PREVENT (e.g. any form of radicalisation – see the [Cardiff Met Website](#) for further information).
- Project with the potential to cause reputational harm to the School/University.

Note: For applications involving PREVENT or animals, approval can be given at SSHSEC level, in conjunction with UEC's approval of the project.

Activities Requiring Ethical Approval

The following activities require ethical approval before any data collection can commence; this includes participant recruitment, sample procurement and analysis of online chatrooms/forums:

- a) All undergraduate and postgraduate dissertation/project work
- b) Postgraduate Research
- c) Staff-led research
- d) Innovation/Enterprise projects
- e) Certain teaching activities. Examples of teaching activities that may require ethical consideration are listed in [Appendix V](#)

If ethical approval has been granted to a project due to the Principal Investigator (PI) being affiliated with another Cardiff Met School, approval from CSSHS does not need to be sought.

For activities conducted externally by staff or students the route to ethical approval depends upon the arrangements at the institution where the Principal Investigator (PI) resides (provided that these are at least equivalent to Cardiff Met arrangements). If the PI is at Cardiff Met, they should apply through the internal School process. If the PI is at an external institution, they should first gain formal ethical approval from that institution prior to seeking approval from Cardiff Metropolitan University.

Ethical approval from another institution does not remove the responsibility of researchers to apply for Cardiff Metropolitan University ethics approval and compliance with the policies laid down by UEC. The Cardiff Met collaborator should provide evidence that the project has received ethical scrutiny and approval for all work undertaken. See also [below for information with regards to Health, Safety and Risk](#).

If data is to be collected in an organisation external to Cardiff Met, written evidence that the member of staff or student has sought such permission must be provided to the School with the application for ethical approval.

Where researchers from external organisations wish to sample the School staff and/or student population for their research, an approved ethics application should be submitted to the Chair of the SSHSEC for review prior to any contact with the desired sample.

For details on informed consent working with children please see the [Cardiff Metropolitan University Guidance Notes](#) for completing an ethics application. For guidance on how to obtain consent online, please refer to [UEC's guidelines](#).

How to Apply for Ethical Approval

Ethics guidance and application forms can be found via the [Research and Innovation Services](#) unit. A useful guide has also been produced for the Research and Ethics Moodle module, available [here](#). Staff can access the [CSSHS Ethics Homepage](#) on SharePoint for submission of applications, as well as links for panel member restricted access.

All applications should ensure to include relevant documentation – see [Guidance](#) for a detailed list.

Undergraduate / PGT applications

New applications will be submitted to a supervisor for checking. If the project subject matter is non-contentious (see Appendices [III](#) and [IV](#)) the supervisor is able to sign off the application as approved. The same applies for amendment applications, and the original ethical approval ID will be preserved for continuity.

If the supervisor has any concerns about an application prior to submittal they are able to contact a member of the relevant panel ([Appendix VIII](#)) for guidance. It is recommended that if a supervisor has doubts about any element of a project, is a new member of staff, is new to the process, or has particular questions, the application should be referred to a panel.

Research / Staff / Enterprise

New applications will be submitted directly to the School for the attention of the required panel (research student applications must be submitted by their supervisor). The same applies for resubmissions and amendment requests, and the original ethical approval ID will be preserved for continuity.

The Panel/Committee has the ability to approve, not approve or reject applications submitted.

Protocols

Under the existing UEC framework, School ethics committees can also consider applications for protocol approval. Protocols are standard procedures which may be used in a variety of contexts. The purpose of protocol approval is to set standards for these procedures across Cardiff Met, and to allow approval of projects which include an approved protocol. Where approved by Panels, protocols must be notified to SSHSEC for information. Refer to Cardiff Met [Protocol Approval](#) for further guidance.

New protocol applications can be submitted directly to the School for the attention of the required panel. The same applies for amendment applications, and the original Protocol ID will be preserved for continuity.

The Panel/Committee has the ability to approve, not approve or reject applications submitted.

Decisions Made by Panels and Committee

Supervisors, panels or SSHSEC can make one of the following decisions for each considered application (see list of Standard Ethics Email responses in [Appendix VI](#))

- Approved
- Not approved (where the application is returned for revision)
- Rejected (where the project is unethical)

In addition, a Panel may also use the option “Defer to SSHSEC” where it feels unable to form an opinion as to whether the application is (or can be made) ethically sound.

Ethical approval, where granted, will normally be for a 12-month period from date of approval. It is the responsibility of the applicant (PI) to abide by the conditions of approval; this includes application for extension of approval. Approval may be granted for periods of up to 5 years in circumstances where projects are designed to last longer or where their implementation depends on securing funding from recognised organisations such as UK Research & Innovation (UKRI), the European Commission, or members of the AMRC. Extensions can be applied for via an amendment form, however the maximum duration of approval, including extensions, is 5 years. For an application to extend its approval beyond 5 years an updated application form will need to be submitted. External grants may be exceptions whereby a period of over 5 years can be granted if covered by external approval.

The approval period covers the active research period for data collection and analysis. For projects involving collection and storage of human samples, please ensure that approval is aligned with sample retention.

We recognise that certain elements such as data analysis for presentation and/or publication can be undertaken outside of this period, so long as these align with the consent gained and aims of the original project.

In cases where existing results or data are to be re-analysed for a new purpose, a new ethical approval request should be submitted. Similarly, if a new investigator intends re-analysing existing data for the original purpose where the ethical approval period has previously ended, a new application must be made.

Amendments requiring the extension to the duration of ethical approval can only be considered twice per project reference before a new application must be submitted. This does not include amendments for other considerations.

Once an ethical approval has expired, i.e. the latest approval end date has lapsed, the route for amendment is no longer available. Should continuation of the project be required within the scope of an ethical approval, a new application must be produced by the PI and referred to panels where appropriate.

It should be noted that although this document and the corresponding institutional forms for ethics application refer to ethical approval, the approval granted either by a supervisor, panel or by SSHSEC reflects the expression of a favourable ethical opinion made on the

basis of the information provided by the applicant. Staff and students in the School should not proceed with projects if during the course of their conduct they come across circumstances that might suggest the basis for ethical approval has changed significantly and may require further ethical consideration. If after receiving approval investigators become concerned about the ethics of their activities they should contact the chair of the panel or committee that granted approval in the first instance for further guidance.

Full minutes or verbal activity report from each Panel will be provided to SSHSEC chair in time for each SSHSEC meeting.

Panels will meet weekly/fortnightly depending on the volume of applications. Meetings should be held in person wherever possible. To be quorate, panel meetings must include minimum of Chair plus 50% of members. E-meetings are allowed, and will become the norm during July and August, where panel chairs should take on board the views of at least 2 other panel members.

SSHSEC will take place quarterly, and preferably a week before UEC in the event of an application needing to be referred on.

Health, Safety and Risk Assessment

The Health and Safety aspects of activities requiring ethical consideration are covered by the School Health and Safety Policy. It is also a requirement for applicants to assess risk in the context of ethics and to complete the relevant Risk Assessment documents. Risk assessments must be provided to the committee or panel on request but are not routinely required as accompanying documents for ethics applications.

The University guidance on Risk Assessments can be found on the dedicated [InSite webpage](#). The Health and Safety Policy is available to read [here](#).

Activities Involving Human Participants

Activities involving human participants are defined as those that:

- directly involve people in the research/innovation/enterprise/teaching activities, through their physical participation. Physical participation may be invasive (e.g. taking of blood or other human materials) and/or non-invasive (e.g. laboratory-based experiments, interviews, questionnaires, surveys, observational, practical sessions) and may include the active or passive involvement of a person (passive refers to the use of secondary data about an individual)
- indirectly involve people in the research/enterprise/teaching activities, through their provision of, or access to, personal data or human materials; involve people acting on behalf of others (e.g. parents/legal guardians/carers of children and the psychologically and/or physically impaired, and supervisors of people in controlled environments e.g. pupils, psychiatric patients, prisoners).

The following principles apply to research specifically involving the administration of supplements to human participants:

- Only manufacturer recommended dosages are permitted unless there is explicit justification and support for higher dosages. Specific details in any instance need to be included in the application for ethical approval.
- Supplements must be purchased by an authorised member of staff and fit for consumption from an approved supplier.
- For UG projects the discipline area may have some money to purchase supplements.
- The supplements that are being administered must be available to the general public to ensure appropriate selection of recognized products.
- For UG and PG projects any measurement and mixing of the supplement must be completed by an authorised CSSHS member of staff.
- Unless there is explicit justification and support for longer exposure, supplementation must be acute (over a short period of time).
- Awareness of UK Anti-Doping regulation. Supplements must be clearly explained to participants, particularly supplements which may be prohibited in competition. It must be made clear that participants still have the responsibility to check all information before consuming supplements.

Reimbursement for participants

Reimbursement for participant expenses (e.g. travel) is subject to panel/SSHSEC approval. Please refer to further guidance in the [Ethics Application Guidance Notes](#).

Human Materials

At Cardiff Met, human materials are defined as all material derived from a human (cellular and acellular) that may be acquired, stored and used, including cell lines. The procurement, storage, handling, transfer, transportation and disposal of human materials must comply with the Policies and Procedures as set out in the University's [Human Samples Quality Management System](#).

Research Requiring Third Party Research Ethics Committee Approval

SSHSEC will not endorse research or projects that require approval from a nationally recognised Research Ethics Committee (REC) until such approval has been granted. In all cases a copy of the relevant REC favourable ethical opinion must be submitted to the School for consideration. Where a PI on the REC-approved research is not from Cardiff Met, evidence supporting the role of Cardiff Met in the project must also be provided.

For projects involving the NHS, REC approval must be obtained via the Integrated Research Application System ([IRAS](#)) which is managed by the NHS Health Research Authority (HRA). Where IRAS approval is required for the project, please ensure to follow the School and University requirements and seek IRAS approval prior to submission to School ethics.

HRA review is required for any research protocol involving:

Drafted by Professor Philip James, Jane Lewis & Katy Burson
Revised by Professor Philip James & Fernando Pabst Silva

Oct 2021

- a) patients and users of the NHS. This includes all potential research participants recruited by virtue of the patient or user's past or present treatment by, or use of, the NHS. It includes NHS patients treated under contracts with private sector institutions;
- b) individuals identified as potential research participants because of their status as relatives or carers of patients and users of the NHS, as defined above;
- c) access to data, organs or other bodily material of past and present NHS patients;
- d) foetal material and IVF material involving NHS patients;
- e) the recently dead in NHS premises;
- f) the use of, or potential access to, NHS premises or facilities; and
- g) NHS staff recruited as research participants by virtue of their professional role.

Where an appropriate NHS Unit has decided that proposed activities do not require REC approval (e.g. service evaluations), a letter specifying exemption must be provided from the relevant unit (e.g. Research & Development Committee) together with the ethics application. See Exceptions and Other Exclusions in the [GAFREC Guidelines](#).

These principles are also applied to research projects involving private hospitals and/or clinics (approval required by the specific institution's REC) as well as non-NHS patients in NHS facilities. Where the third party is a health care institution outside the UK, approval from a relevant recognised REC in that country will be required.

Other agencies may also have specific requirements for ethical approval (e.g. Ministry of Defence or Ministry of Justice). In these instances applicants must notify the relevant SSHSEC panel with evidence of written permission.

Appeals and Complaints Procedure

Applicants for Ethical Approval have the right of appeal against a decision. The process for such appeals and any complaints can be found in [Appendix VII](#).

Audit of Approved Projects

SSHSEC will undertake a planned programme of annual audits of projects. Audit of projects will be an annual agenda item for SSHSEC and will entail representative sampling of submitted projects. Quality of panel decision making will be assessed by consideration of the decisions made.

An audit of projects approved at supervisor sign off level will also be undertaken by the panels using random selection of projects held by each supervisor. Audits will be used to improve the ethics process and to inform staff development activities.

Franchise ethics, whether devolved, semi-devolved or neither, will also be subject to the audit regime presented above.

Composition of panels

Membership of the six panels is presented in [Appendix VIII](#). Panels will strive, where possible, to encompass a non-expert view by the addition of panel member(s) with cross-disciplinary expertise.

GDPR Compliance and Data Management

It is the responsibility of the Principal Investigator to ensure the project aligns with Cardiff Metropolitan University's policies and procedures regarding GDPR compliance. For further information please [click here](#).

Following completion of a project, data will normally be held securely for a period of 10 years. Retention of data for undergraduate or postgraduate taught projects where there is no intention to publish will in turn be governed by the expectations of the respective award regulations. For full guidance please refer to the [Research Data Management Policy and the Research Data Management subsite of RIS](#).

Contact Details

Please contact your respective Ethics support team at HealthEthics@cardiffmet.ac.uk (for Health sub-panels) or SportEthics@cardiffmet.ac.uk (for Sport sub-panels).

Appendix I

School of Sport and Health Sciences Ethics Committee (SSHSEC) Formal terms of reference

SSHSEC will:

1. With the approval of UEC establish, implement, and keep under review procedures and guidelines for the consideration, approval, and monitoring of research, innovation, enterprise and teaching projects which are undertaken by members of staff and/or student members of the School; this includes the setting up of sub-panels to consider applications for approval from designated parts of the School.
2. Ensure projects involving human participants, samples derived from human material, animals, or projects with potential to cause reputational harm to the University, are carefully considered and ethically undertaken.
3. Ensure that ethical principles are clearly laid down and are disseminated to staff and students of the School, and that ethical practices are adhered to.
4. Ensure that appropriate training in ethics is put in place for members of the School undertaking or supervising research involving human participants.
5. Keep the School's Ethics Guidelines under annual review.
6. Report annually to UEC on the numbers and types of projects considered by the committee, together with details of any policy or procedural changes recommended by the committee.

Appendix II

Links to Useful Ethics Guidelines

[BASES](#)

[BBSRC](#)

[BERA](#)

[British
Psychological
Society](#)

[British
Sociological
Association](#)

[ESRC](#)

[GAFREC](#)

[HCRW](#)

[HRA](#)

[Human
Tissue
Authority](#)

[Human Tissue
Authority
\(Relevant
Materials\)](#)

[IRAS](#)

[MRC](#)

[National
Children's
Bureau](#)

[National Offender
Management
Service](#)

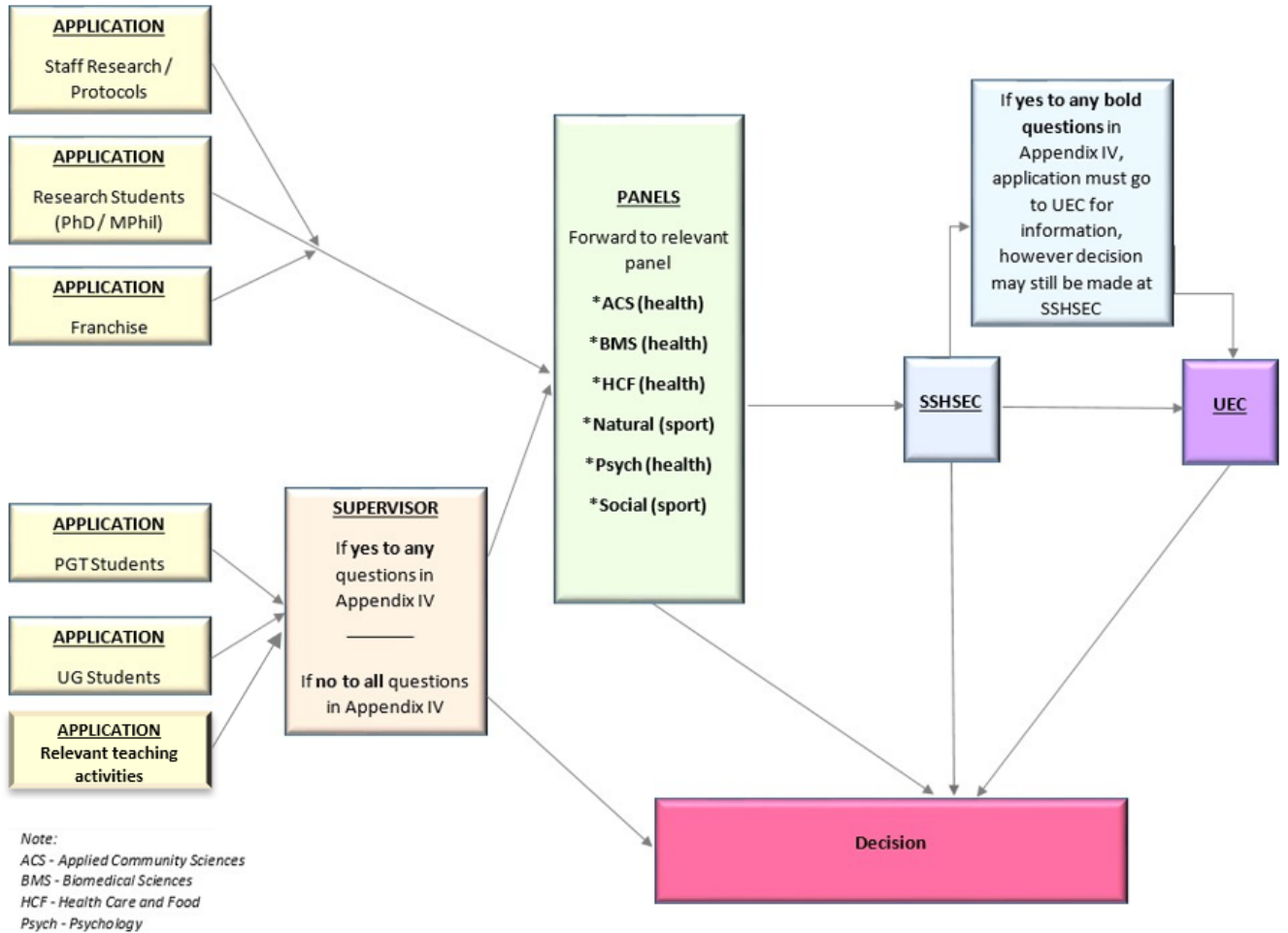
[NERC](#)

[UKRI](#)

[UUK
Concordat](#)

Appendix III

Application Decision Process



Appendix IV

Checklist for supervisors to assess whether an application requires panel approval.

Will the study involve animals?	Yes	No
Will the study involve children*?	Yes	No
Will the study involve vulnerable** populations and/or participants who are unable to give informed consent?	Yes	No
Will the study involve working with NHS patients?	Yes	No
Will the project involve human materials***?	Yes	No
Will the project involve clinical intervention?	Yes	No
Are drugs, placebos, or other substances (e.g. vitamins) to be administered to participants?	Yes	No
Will the study involve prolonged or repetitive testing OTHER THAN repetitive training exercises of a type which form part of the participants normal activities (e.g. athletics or music training)?	Yes	No
Will the study involve sensitive research where a topic area deals with sensitive aspects of participant behaviour?	Yes	No
Will financial inducements, other than reasonable expenses and compensation of time, be offered to participants?	Yes	No
Will the study involve deceptive research where an investigator actively sets out to significantly misinterpret himself/herself, the nature of the research, and/or any other significant characteristics of the research?	Yes	No
Will the study involve work concerning prevention, e.g. terrorism?	Yes	No
Does your project intend to recruit participants using an existing email distribution list?	Yes	No
Does the study have the potential to cause reputational harm to the University?	Yes	No

Notes:

If Yes to questions in bold, application must be referred to SSHSEC via Panel.

If Yes to ANY question listed, or if in any doubt, application to be referred to Panel.

* Wherever possible consent of parents or those with legal responsibility for the individual should be obtained for any study involving under 18's. Projects should be referred to SSHSEC via Panel with detail on how consent and/or assent will be obtained.

Please consider the [Ethics Application Guidance Notes](#) for clarification on under-18 consent. Also for reference, [BPS Standards and Guidelines](#) includes link to the BPS Code of Human Research Ethics.

** [Vulnerable Groups Act 2006](#)

*** [Human Materials - further information](#)

Appendix V

Definitions and examples of teaching activities that may require ethical approval

The following list is not intended to be exhaustive and if you are in any doubt, please contact the Chair of your relevant Ethics Panel for advice.

Please note that this list does NOT mention taught undergraduate or postgraduate projects or dissertations. These ALWAYS require ethical approval at either supervisor or panel level as appropriate.

Teaching activity that DOES require ethical approval:

- Activity that involves use of human materials (procured outside the University), including those deemed not relevant under local Human Tissue Codes of Practice.
- Activity that involves use of human materials (procured as part of the teaching activity), including those deemed not relevant under local Human Tissue Codes of Practice.
- Activity where drugs, placebos or other substances (with the exception of retail food items) are administered to participants.
- Activity that could induce physiological or psychological stress.
- Activity that involves participants who have limited capacity to give informed consent by virtue of mental illness or intellectual/learning disability.
- Activity that might involve a serious Health and Safety risk.

Teaching activity that MAY require ethical approval:

- Activity that involves participants under the age of 18 years.
- Activity where non-retail food samples are administered to participants.
- Activity where physical exercise may induce physiological stress in some individuals.
- Activity where anonymised data are collected from students by questionnaire for the purposes of data collection for internal teaching, observing and reporting on professional practice, or statistical analysis methods only.

Teaching activity that DOES NOT require ethical approval:

- Paper based activity, only including documents in the public domain.
- Laboratory based, not involving human participants or human materials.

The School will not generally give approval for teaching activity that involves participants unable to give informed consent or requests for covert activity or deception of participants in a teaching context.

Appendix VI

CARDIFF SCHOOL OF HEALTH SCIENCES

Standard Ethics Emails

1. Approved – incorporating a paragraph for any VERY minor special conditions.
2. Not Approved – incorporating a list of required amendments
3. Rejected
4. Amendment Approved
5. Amendment Not Approved – incorporating a list of required amendments
6. Amendment Rejected
7. PROTOCOL Approved
8. PROTOCOL Not Approved – incorporating a list of required amendments
9. PROTOCOL Rejected

Welsh language emails are also provided.

Appendix VII

Appeals Procedure

1. Appeals against Panel Decisions

Where an application has been rejected by a Panel, the applicant (or supervisor if the applicant is a student) has the right to request that the decision is reconsidered by the relevant Panel. Appeals should be made to the Chair of the Panel in the first instance via the Research and Enterprise Support Manager, setting out the cause(s) for concern. This communication should contain sufficient information to allow the grounds for appeal to be clearly understood. If the Panel revokes its original decision, the appeal can be upheld without a hearing.

If that Panel affirms its original decision, the applicant has the right to appeal to SSHSEC in which case the appeal will be received by SSHSEC as written. SSHSEC will then convene a hearing and invite the applicant to meet with them. If additional expertise is required, the Chair may invite up to two members of staff with relevant expertise but who have not been involved in the initial decision to join the panel. After the hearing, SSHSEC will determine whether the applicant is successful. It is the duty of the Ethics Appeal Panel to provide clear justification for its decision regarding whether an appeal has been successful or unsuccessful.

The Panel must consider any written appeal within 10 working days and SSHSEC within 20 working days. All appeals must be made within 2 months of the original decision being relayed to the applicant/supervisor.

2. Appeals against SSHSEC Decisions

Where an application has been rejected by SSHSEC, the applicant (or supervisor if the applicant is a student) has the right to request that the decision is reconsidered by the Committee. Appeals should be made to the Chair of SSHSEC via the Research and Enterprise Support Manager, setting out the cause(s) for concern. This communication should contain sufficient information to allow the grounds for appeal to be clearly understood. If the SSHSEC revokes its original decision, the appeal can be upheld without a hearing.

If SSHSEC affirms its original decision, the applicant has the right to appeal to UEC in which case the appeal will be forwarded by SSHSEC to the Chair of UEC with the justification for its decision.

SSHSEC must consider any written appeal within 20 working days. Appeals must be made within 2 months of the original decision being relayed to the applicant.

3. Complaints

Complaints against SSHSEC or the School Panels should be made following the University published complaints procedure

Appendix VIII

SSHSEC membership as of 2021/22

SSHSEC:	Social Sub-Panel:	Natural Sub-Panel:	Psychology Sub-Panel:	Biomedical Sciences Sub-Panel:	Applied Community Sciences & Health Care and Food Join Sub-Panel:
Adams, Rachel Ameer, Sedeek Bailey, Jake Cutler, Mike Duggan, Sean Edwards, Lisa Hodgetts, Helen James, Philip (chair) Jones, Huw Jones, Robyn Karani, George Kelly, Claire Michell, Jacquie O'Flaherty, Donna Oliver, Jon Pedley, Jason Perham, Nick Pugh, Chris Sykes, Peter Tatham, Arthur Thirlaway, Katie	Castro, Jose Corsby, Charlie Dohme, Lea Edwards, Lisa (chair) Hardman, Alun Lane, Andrew Wasley, David	Lord, Rachel Moore, Izzy Moeskops, Sylvia O'Donoghue, Peter Pedley, Jason (chair) Stembridge, Michael Von Lieres Und Wilkau, Hans Williams, Jessica	Bagshaw, Ruth Hallingberg, Britt Jackson, Abigail Perham, Nick (chair) Phillips, Rhiannon Rolfe, Heather	Adams, Rachel (chair) Ahluwalia, Maninder Beeton, Mike Davies, Amanda Kelly, Claire Manoharan, Veenu Morris, Keith Foley, Paul	Harris, Rhiannon Karani, George (co-chair) Lewis, Jane Mayr, Robert Scholey, Valerie Tatham, Arthur (co-chair) Whatley, Judith Blaxland, James
Support:	SportEthics@cardiffmet.ac.uk		HealthEthics@cardiffmet.ac.uk		