



Cardiff
Metropolitan
University

Prifysgol
Metropolitan
Caerdydd



Undergraduate

Handbook

BA (Hons) Global Business Management

Cardiff School of Management



Contents

Introduction	2
Essential Information	4
Meet the Team	6
Welcome Week	7
Useful Information	11



Introduction

Welcome to Cardiff Metropolitan University

Congratulations on starting your Cardiff Met Journey! We have put together a series of activities and events to help you get to know Cardiff Met, connect with your programme of study, and meet staff and other students.

Welcome Week provides you with the opportunity to settle into Cardiff Met and to get involved with your programme of study right from the start. During Welcome Week you will be involved in a group project which will provide you with a taste of what you can expect during your studies at Cardiff Met. You will also be able to:

1. Meet your Year Tutor/Personal Tutor, Programme Director, and fellow students.
2. Attend social activities and events on campus.
3. Work on a group project and present findings back to programme team.
4. Get to know the Cardiff Met campuses and surrounding areas.
5. Find out what services we have available to support you on your Cardiff Met journey.

When you turn up for your first day you will meet your Year Tutor/Personal Tutor who will provide academic support and guidance during your time of study at Cardiff Met. They will also give you your Cardiff Met student card - as long as you've uploaded your photograph!

Please make sure that you attend the activities planned by your programme during Welcome Week, so you are prepared to start your Cardiff Met journey.

Finally, I hope you enjoy your time studying at Cardiff Met and I look forward to meeting you during Welcome Week.

Yours sincerely,
Dr Kyriaki Flouri
Programme Director



Essential Information

Programme Details



A very warm welcome to the BA (Hons) Global Business Management Programme in Cardiff School of Management. It is a great pleasure to have you with us in the Cardiff Metropolitan University family. Our goal and promise are to do our best to help you experience an exciting educational journey of discovery. We are confident that the year ahead will be full of rewarding experiences.

The aim of this course is to help you develop a critical appreciation of the role managers undertake in the modern business world around the globe. The programme starts with a 2-week compulsory (non-credit bearing) course that will enable you to understand the nature of the programme but also start developing essential skills for global business management students. The top-up degree is run over two semesters. In the first semester all students are required to study three compulsory modules including Global Human Resource Management, Global Supply Chain Management, as well as Economics, Strategy and Management. At the end of the first semester you will be able to decide whether you wish to continue your studies in the generic BA (Hons) Global Business Management degree or to take one of the three pathways that the programme offers:

- BA (Hons) Global Business Management (Human Resource Management)
- BA (Hons) Global Business Management (Logistics and Supply Chain Management)
- BA (Hons) Global Business Management (Strategic Management)

Through the use of case studies, videos and practical exercises your engagement in all subject areas will enhance your learning experience. The delivery of the curricular material will be through a blend of lectures, seminars and workshops. The assessments can take a variety of forms although a key feature of this programme is the reliance on coursework rather than examination-based assessments.



International Students

We understand that for international students coming to the UK, adjusting to a new culture; finding somewhere suitable to live and following new processes and procedures can be quite overwhelming. The Global Student Advisory Service is available to offer friendly advice and support to all international students in relation to welfare concerns, academic skills, and immigration matters. For more information about the services available, access the links below:

Global Student Advisory Support

[Global Student Advisory Service International Welfare Advice](#)

[Global Student Advisory Service International Academic Advice](#)

[Global Student Advisory Service Immigration Advice](#)

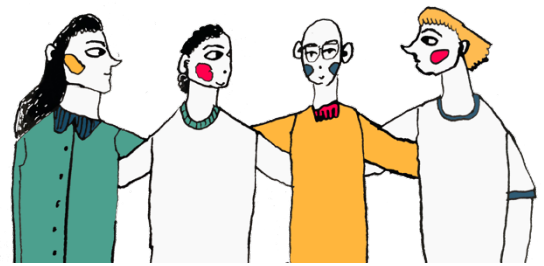
Global Student Advisory Contacts

Welfare advice – intstudentadvice@cardiffmet.ac.uk

It is also important that you attend the activities planned for your course during Welcome Week, so you get to meet your Programme Directors, Tutors, and the rest of your cohort. This will help you to settle into your new environment and make new friends.



Meet the Team



Dr Jane Wang - Senior Lecturer/Year Tutor



Dr Xiaoni Ren - Senior Lecturer in HRM



Raja Sreedharan - Senior Lecturer in Operations and Supply Chain Management



Dr Mohamed Ashmel - Lecturer in Economics, Strategy and Management



Welcome Week

What to expect

During the week you will complete a project, which you will undertake with a group of other new students from your programme, supported by staff and current students who are on your programme. There will also be lots of help from the other university services, showing some great tools and techniques you can use to make your project a success.



At the end of the week, we will also give you some feedback on the strengths of your group's approach, sharing and celebrating what we have discovered together.

There will be an introduction to your new School and Programme and lots of fun activities to help you meet new people.

You will need to complete a bit of administration and check-in with your programme, so we know who is doing what, and when. You will also need to complete any outstanding enrolment matters, pick up Students' Union cards, and touch base with any specialised support services that you need.

Here's what Cardiff Met students enjoyed about Welcome Week

"Helped me settle in and took the pressure off travelling to a new place"

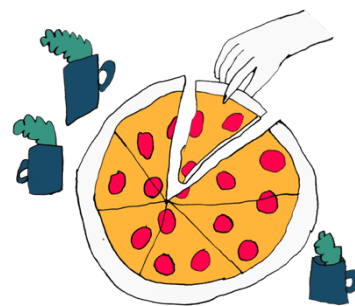
"The group projects to find out about our peers was a nice way of getting to know everyone"

"Helpful to chat informally to the Programme Director and chat about random things to help settle in".



Freshers' Fayre

The Freshers' Fayre, organised by the [Students' Union](#), is your first chance to meet all our [SU Societies](#), [SU Sports Teams](#) and of course a chance to grab all manner of freebies from our commercial partners! The fayre is an all-day event taking place



on Wednesday within NIAC on the Cyncoed campus! It is one of the highlights of the Freshers calendar and one of the only times during your university journey that every student from all Cardiff Met schools will be in the same place!

Head over to the [Cardiff Met Students' Union website](#) for up-to-date information on events, societies, support and more.



Welcome Week Activities (Foundation and Undergraduate)

During Welcome Week you will have the opportunity to:

- Attend a welcome meeting with your Programme Director and meet the team, where they will provide an introduction and outline expectations.
- Meet other students on your programme of study.
- Meet your Personal Tutor.
- Take part in a welcome week project with other students on your programme of study and present the findings from your project to staff and peers.
- Familiarise yourself with the campus.
- Explore what services are available to support you on your learner journey.
- Attend Fresher's Fayre on Wednesday.
- Attend a programme Meet & Greet Inspirational Session.
- Familiarise yourself with the digital tools you will be expected to use during your studies.
- Take part in a 'wrap up' session, reflect on the week and make sure you know what your timetable is looking like for the first week of teaching.
- Attend the Cardiff Met celebration event on Friday afternoon.

Please note you will find a detailed timetable for your programme of study on the Welcome Week site.



Personal Welcome Week Checklist



During Welcome Week you need to make sure that you have:

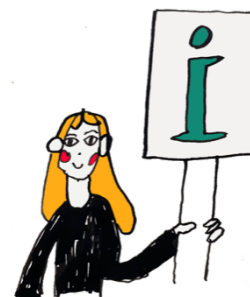
- Completed the enrolment process.
- Collected your student ID card.
- Attended programme activity sessions.
- Attended some social events on campus/online.
- Attended Fresher's Fayre
- Met with your Personal Tutor
- Familiarised yourself with the library and any support services you might need e.g.
Dyslexia or Disability help



Useful Information

New Students Information

The [Course Joining Information website](#) has lots of useful information to help with your planning. Simply select your level of entry on the website to find out more and access your important joining information.



Student Services

[Student Services](#) provide support and guidance, including mental health, disability support, careers advice, information on part-time jobs and money management.

SU Welcome Guide

An interactive guide to help you navigate your journey into and throughout your university life. Take the tour and enjoy each section designed to help you get to know Cardiff Met.

[What you need to know before you go](#)

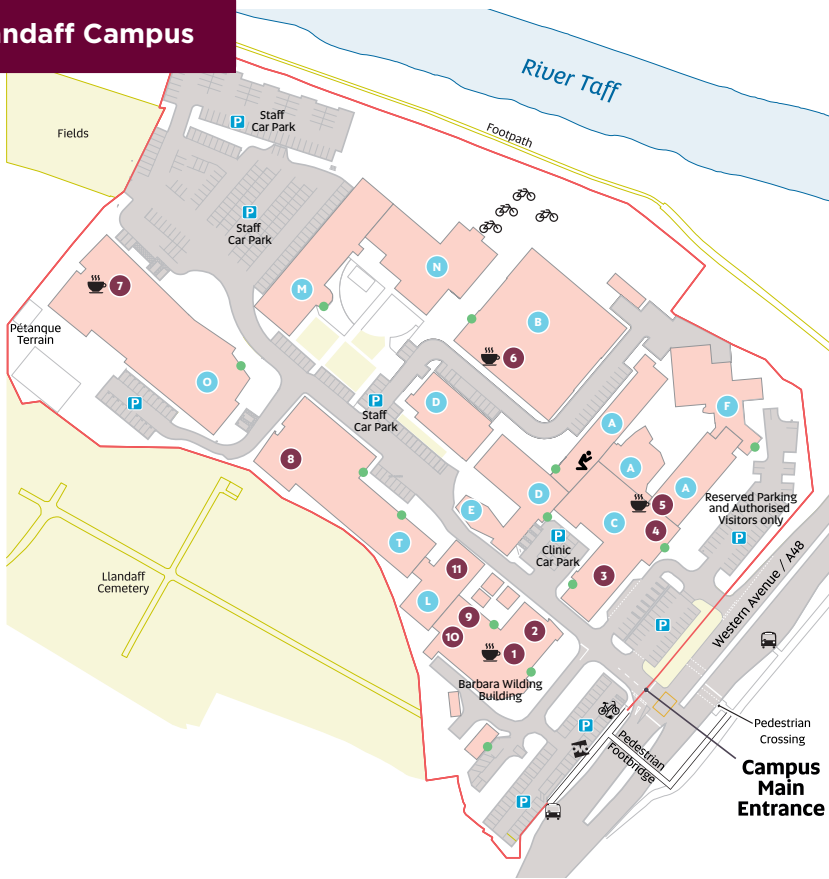


Academic Calendar 2023/24

[Academic Calendar 2023/2024](#)



Llandaff Campus



Key

- | | | |
|------------------------------|----------------------------------|---------------------------|
| 1 The Hub | 8 IT Help Desk (First Floor) | P Parking |
| 2 Cym (First Floor) | 9 The Global Lounge | 🚲 Electric Bikes |
| 3 Podiatry Clinic | 10 Students' Union (First Floor) | 🚲 OVO Bikes |
| 4 Main Reception & i-Zone | 11 Learning Centre | 🚲 Bike Rack |
| 5 The Gallery (First Floor) | ● Building letter | 🚰 Bus Stop |
| 6 The Box Café (First Floor) | ● Building Main Entrance | ☕ Café |
| 7 The Atrium | | 🕌 Multi-faith prayer room |

All our rooms use the same naming formula – *Building Floor . Room Number*. So if you're looking for 01.18, go to building O, climb to the first floor, and find room number 18. Or for B0.10 go to building B, stay on the ground floor and look for room 10. In the naming formula, 'LL' refers to Llandaff.



Cardiff
Metropolitan
University

Prifysgol
Metropolitan
Caerdydd

Wythnos groeso
Welcome week

2023