



Cardiff  
Metropolitan  
University

Prifysgol  
Metropolitan  
Caerdydd



*Undergraduate*

# Handbook

BSc (Hons) Computer Security

Cardiff School of Technologies



# Contents

<b>Introduction</b>	<b>2</b>
<b>Essential Information</b>	<b>4</b>
<b>Meet the Team</b>	<b>5</b>
<b>Welcome Week</b>	<b>6</b>
<b>Useful Information</b>	<b>10</b>

---



# Introduction

## Welcome to Cardiff Metropolitan University

### WELCOME FROM YOUR PROGRAMME DIRECTOR

I would like to welcome you to Cardiff Metropolitan University and the Cardiff School of Technologies.

My team and I look forward to working in partnership with you to deliver a high-quality education that meets your expectations. It is our aim to help you make the most of your chosen study programme and achieve your objectives to the fullest on completion of the course.



Once you have enrolled with Cardiff Met, you will be assigned a Personal Tutor who will provide guidance and support throughout your course. I will also be available should you need any support. If you have concerns or questions before your arrival, please do contact me directly.

This welcome pack contains details of your chosen course and what to expect in your induction week at the university. In addition, we have provided some resources for those students who are looking to undertake some preparatory study.

The 'Welcome Week' gives you the opportunity to meet your fellow students, lecturers, and personal tutor and to learn about your university and city. We hope that you will have a pleasant, informative induction week.

My team and I look forward to welcoming you all.

## *Vibhushinie Bentotahewa*

Dr. Vibhushinie Bentotahewa (vibentotahewa@cardiffmet.ac.uk)  
Programme Director – BSc Computer Security



# Essential Information

## Programme Details

This programme will equip graduates with the necessary skills and knowledge to understand, apply and critically evaluate the principles that underpin Computer Security. In addition, graduates will be equipped with the skills to develop secure systems and use industry-standard tools and techniques to implement high-quality security solutions. Students are encouraged to function as independent learners, employing critical thinking, real-world analysis and modelling skills. This enables students to contextualise their study in a broader technical and societal perspective and develop core professional and ethical foundations.



## Part-Time Students

Whilst full-time students should participate in everything, we recognise you may not be able to do so because of other commitments, and we understand this.

Talk with your Personal Tutor about which activities will be most valuable for you. You will be welcome to join in all events during the week as and when you can. Do, though, ensure that you have registered and completed the required paperwork before attending any events.

## International Students

We understand that for international students coming to the UK, adjusting to a new culture, finding somewhere suitable to live, and following new processes and procedures can be quite overwhelming. The Global Student Advisory Service is available to offer friendly advice and support to all international students in relation to welfare concerns, academic skills, and immigration matters. For more information about the services available, access the links below:



## Global Student Advisory Support

[Global Student Advisory Service International Welfare Advice](#)

[Global Student Advisory Service International Academic Advice](#)

[Global Student Advisory Service Immigration Advice](#)

## Global Student Advisory Contacts


Welfare advice – [intstudentadvice@cardiffmet.ac.uk](mailto:intstudentadvice@cardiffmet.ac.uk)

It is also important that you attend the activities planned for your course during Welcome Week so you get to meet your Programme Director, Tutors, and the rest of your cohort. This will help you to settle into your new environment and make new friends.



# Meet the Team



	<p><b>Dr. Vibhushinie Bentotahewa</b>  <b>(vibentotahewa@cardiffmet.ac.uk)</b></p> <p><b>Programme Director – BSc Computer Security</b></p>
<p><b>Modules to be studied in Academic Year 23/24.</b></p> <p>Confirmed Module Leader details will be provided towards the start of term. For more information on our CST teaching staff and their specialised areas please visit <a href="#">the website</a>.</p>	
SEC4000	Information, Risk and Law (Term 1)
SEN4000	Principles of Programming (Term 1)
IST4000	Explore (Year-Long)
SEC4001	Threats and Attacks (Term 2)
CMP4011	Architectures and Operating Systems (Term 2)
SEN4001	Web Design and Databases (Term 2)



# Welcome Week

## What to expect

During the week you will complete a project, which you will undertake with a group of other new students from your programme, supported by staff and current students who are on your programme. There will also be lots of help from the other university services, showing some great tools and techniques you can use to make your project a success.



At the end of the week, we will also give you some feedback on the strengths of your group's approach, sharing and celebrating what we have discovered together.

There will be an introduction to your new School and Programme and lots of fun activities to help you meet new people.

You will need to complete a bit of administration and check-in with your programme, so we know who is doing what, and when. You will also need to complete any outstanding enrolment matters, pick up Students' Union cards, and touch base with any specialised support services that you need.

## Here's what Cardiff Met students enjoyed about Welcome Week

*"Helped me settle in and took the pressure off travelling to a new place"*

*"The group projects to find out about our peers was a nice way of getting to know everyone"*

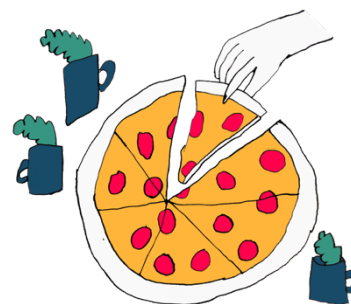
*"Helpful to chat informally to the Programme Director and chat about random things to help settle in".*



## Programme Activities and Projects

### EXPLORING CYBER ATTACKS!

Select five recent cyber-attacks. Based on your search, please answer the following questions:



1. List the recent cyber-attacks.
2. Select one that you would like to investigate further.
3. Why did you want to explore deeper into this cyber-attack?
4. What are your findings about the chosen cyber-attack (i.e. tools that have been used in the attack; security mechanisms that can be deployed to minimise the impact)?
5. How do your findings in Q4 contribute to your chosen programme?

## Social Activities

Further information on social activities will be available in your induction week timetable, which will be provided closer to the start of term.

## Freshers' Fayre

The Freshers' Fayre, organised by the [Students' Union](#), is your first chance to meet all our [SU Societies](#), [SU Sports Teams](#) and, of course, a chance to grab all manner of freebies from our commercial partners! The fayre is an all-day event taking place on Wednesday within NIAC on the Cyncoed campus! It is one of the highlights of the Freshers calendar and one of the only times during your university journey that every student from all Cardiff Met Schools will be in the same place!

Head over to the [Cardiff Met Students' Union website](#) for up-to-date information on events, societies, support and more.





## Welcome Week Activities

During Welcome Week you will have the opportunity to:

- Attend a welcome meeting with your Programme Director and meet the team, where they will provide an introduction and outline expectations.
- Meet other students on your programme of study.
- Meet your Personal Tutor. \*
- Take part in a welcome week project with other students on your programme of study and present the findings from your project to staff and peers.
- Familiarise yourself with the campus.
- Explore what services are available to support you on your learner journey.
- Attend Fresher's Fayre on Wednesday.
- Familiarise yourself with the digital tools you will be expected to use during your studies.
- Take part in a 'wrap up' session, reflect on the week and make sure you know what your timetable is looking like for the first week of teaching.
- Attend the Cardiff Met celebration event on Friday afternoon.

Please note you will find a detailed timetable for your programme of study on the Welcome Week site.

\*If you would like to request a Welsh speaking Personal Tutor, please contact the School as soon as possible and we will do our best to accommodate your request. Contact email: [CSTAdministration@cardiffmet.ac.uk](mailto:CSTAdministration@cardiffmet.ac.uk)



## Personal Welcome Week Checklist



During Welcome Week you need to make **sure** that you have:

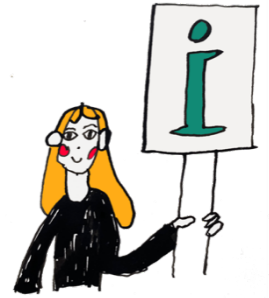
- Completed the enrolment process.
- Collected your student ID card.
- Attended programme activity sessions.
- Attended some social events on campus/online.
- Attended Fresher's Fayre
- Met with your Personal Tutor
- Familiarised yourself with the library and any support services you might need  
e.g. Dyslexia or Disability help



# Useful Information

## New Students Information

The [Course Joining Information website](#) has lots of useful information to help with your planning. Simply select your level of entry on the website to find out more and access your important joining information.



## Student Services

[Student Services](#) provide support and guidance, including mental health, disability support, careers advice, information on part-time jobs and money management.

## SU Welcome Guide

An interactive guide to help you navigate your journey into and throughout your university life. Take the tour and enjoy each section designed to help you get to know Cardiff Met.

[What you need to know before you go](#)

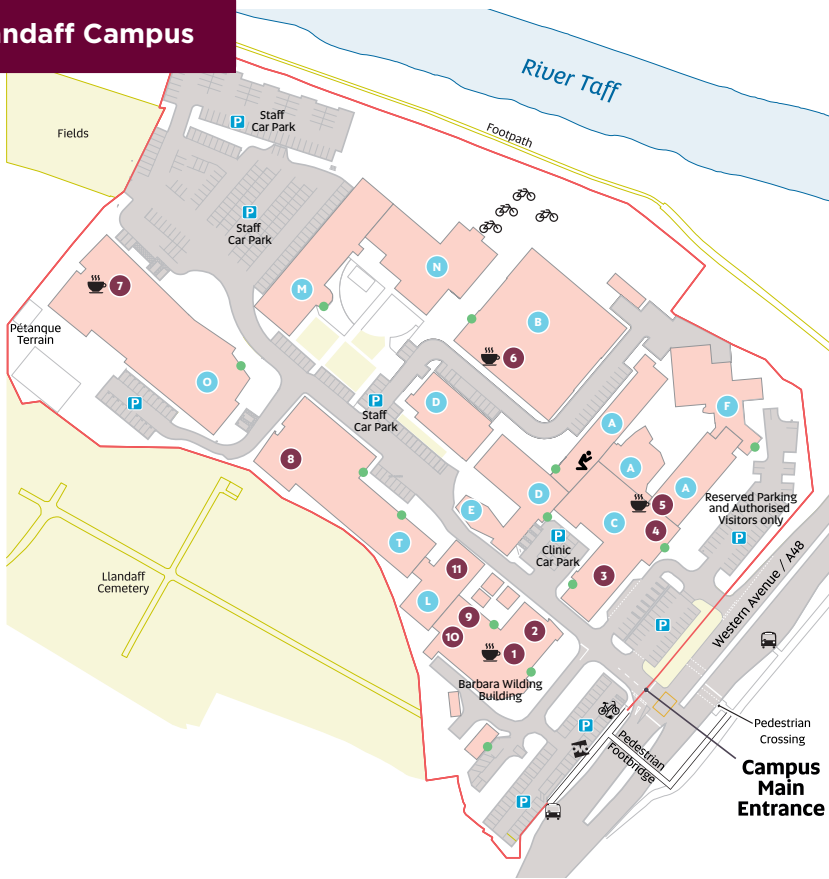


## Academic Calendar 2023/24

[Academic Calendar 2023/2024](#)



# Llandaff Campus



## Key

- |                              |                                  |                           |
|------------------------------|----------------------------------|---------------------------|
| 1 The Hub                    | 8 IT Help Desk (First Floor)     | P Parking                 |
| 2 Cym (First Floor)          | 9 The Global Lounge              | 🚲 Electric Bikes          |
| 3 Podiatry Clinic            | 10 Students' Union (First Floor) | 🚲 OVO Bikes               |
| 4 Main Reception & i-Zone    | 11 Learning Centre               | 🚲 Bike Rack               |
| 5 The Gallery (First Floor)  | ● Building letter                | 🚰 Bus Stop                |
| 6 The Box Café (First Floor) | ● Building Main Entrance         | ☕ Café                    |
| 7 The Atrium                 |                                  | 🙏 Multi-faith prayer room |

All our rooms use the same naming formula – *Building Floor . Room Number*. So if you're looking for 01.18, go to building O, climb to the first floor, and find room number 18. Or for B0.10 go to building B, stay on the ground floor and look for room 10. In the naming formula, 'LL' refers to Llandaff.



Cardiff  
Metropolitan  
University

Prifysgol  
Metropolitan  
Caerdydd

Wythnos groeso  
Welcome week

2023