

Welcome Week Handbook

MSc Robotics & AI
Cardiff School of Technologies

Academic year
2023/2024



Cardiff
Metropolitan
University

Prifysgol
Metropolitan
Caerdydd

Contents

Introduction	2
Essential Information	3
Meet the Team	5
Welcome Week	6
Useful Information	11



Introduction

Welcome to Cardiff Metropolitan University

Congratulations on starting your Cardiff Met Postgraduate Journey! We have put together a series of activities and events to help you get to know Cardiff Met, connect with your programme of study, and meet staff and other students.



Welcome Week provides you with the opportunity to settle into Cardiff Met and to get involved with your postgraduate studies right from the start. During Welcome Week you will be involved in a series of activities which will provide you with a taste of what you can expect during your postgraduate studies at Cardiff Met. You will also be able to:

1. Meet your Programme Director, and fellow students.
2. Attend social activities and events on campus.
3. Work on a group project and present findings back to the programme team.
4. Get to know the Cardiff Met campuses and surrounding areas.
5. Find out what services we have available to support you on your Cardiff Met journey.

When you turn up for your first day you will meet a range of people who will provide academic support and guidance during your time of study at Cardiff Met. They will also give you your Cardiff Met student card, as long as you've uploaded your photograph!

Please make sure that you attend the activities planned by your programme of study during Welcome Week, so you are prepared to start your Cardiff Met postgraduate journey.

Finally, I hope you enjoy your time studying at Cardiff Met and I look forward to meeting you during Welcome Week.

Yours sincerely,

Shadan Khan Khattak

Programme Director

Email: skhattak@cardiffmet.ac.uk



Essential Information

Programme Details

The programme aims to develop ethical and professional Robotics and Artificial Intelligence (AI) postgraduates who possess advanced knowledge and independent competencies, of research, analysis, design and evaluation, to cross the conventional boundaries to modern service, industrial and social robotics applications design, applying cutting edge Machine Learning (ML) techniques to be integrated on a range of physical robots. The specialist knowledge relating to robotics and AI applications by examining the integration of robotic visions, speeches, behaviours, semi-autonomous manoeuvre, sensors and actuators with abroad horizontal managerial knowledge and practical skillsets.



Part-Time Students

Whilst full-time students should participate in everything, we recognise you may not be able to do so because of other commitments, and we understand this.

Talk with your Personal Tutor about which activities will be most valuable for you. You will be welcome to join in all events during the week as and when you can. Do, though, ensure that you have registered and completed the required paperwork before attending any events.

International Students

We understand that for international students coming to the UK, adjusting to a new culture, finding somewhere suitable to live, and following new processes and procedures can be quite overwhelming. The Global Student Advisory Service is available to offer friendly advice and support to all international students in relation to welfare concerns, academic skills, and immigration matters. For more information about the services available, access the links below:



Global Student Advisory Support

[Global Student Advisory Service International Welfare Advice](#)

[Global Student Advisory Service International Academic Advice](#)

[Global Student Advisory Service Immigration Advice](#)

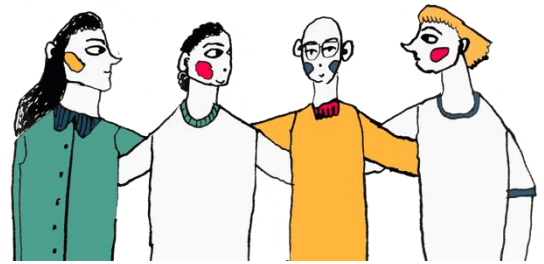
Global Student Advisory Contacts

Welfare advice – intstudentadvice@cardiffmet.ac.uk

It is also important that you attend the activities planned for your programme of study during Welcome Week, so you get to meet your Programme Directors, Tutors, and the rest of your cohort. This will help you to settle into your new environment and make new friends.



Meet the Team



Modules to be studied in Academic Year 23/24.

Confirmed Module Leader details will be provided towards the start of term. For more information on our CST teaching staff and their specialised areas please visit [the website](#).

Please find below the programme modules for Academic Year 2023/24

SEMESTER 1

ENG7007 - Applications for Social and Service Robots
CIS7034 - Vision with Deep Learning

SEMESTER 2

ENG7003 - Advanced AI in Robotics
CIS7035 - Mobile Robotics
CIS7036 - 3D Bio-Inspired Robot Design
CIS7016 - Research Methods

OPTIONAL MODULES Sem 1*

ENG7005 - Frontiers in Technology
CIS7028 - Information Security
CIS7031 - Programming for Data Analysis
ENG7009 – Sensors and Actuators

*please note, all optional modules are subject to minimum viability and resource availability

YEAR

CIS7017 – Technology Dissertation



Welcome Week

What to expect

During the week you will have the opportunity to engage in several activities, which you will undertake with a group of other new postgraduate students from your programme, supported by staff and current students

who are on your programme. There will also be lots of help from the other Cardiff Met services showing some great tools and techniques you can use during your post graduate journey.



There will be an introduction to your new school and programme of study and lots of activities to help you meet new people.

You will need to complete a bit of administration and check-in with your programme team, so we know who is doing what, and when. You will also need to complete any outstanding enrolment matters, pick up Students' Union cards, and touch base with any specialised support services that you need.

Here's what Cardiff Met students enjoyed about Welcome Week

"Helped me settle in and took the pressure off travelling to a new place"

"The group activities helped me to find out about our peers was a nice way of getting to know everyone"

"Helpful to chat informally to the Programme Director and chat about random things to help settle in".



Programme Activities and Projects

During the next year, you will be working on different machine learning techniques. During the welcome week, you will get a chance to explore the different types of machine learning techniques. Choose one of the following MATLAB onramp courses to complete during the welcome week:

1. Machine Learning Onramp
(<https://matlabacademy.mathworks.com/details/machine-learning-onramp/machinelearning>)
2. Deep Learning Onramp
(<https://matlabacademy.mathworks.com/details/deep-learning-onramp/deeplearning>)
3. Reinforcement Learning Onramp
(<https://matlabacademy.mathworks.com/details/reinforcement-learning-onramp/reinforcementlearning>)
4. Computer Vision Onramp
(<https://matlabacademy.mathworks.com/details/computer-vision-onramp/orcv>)

On the last day of the welcome week, you may be asked to deliver a short presentation on what you have learned from the Onramp course of your choice.

Social Activities

Further information on social activities will be available in your induction week timetable, which will be provided closer to the start of term.





Welcome Week Activities



During Welcome Week you will have the opportunity to:

- Attend a welcome meeting with your Programme Director and meet the team, where they will provide an introduction and outline expectations.
- Meet other postgraduate students.
- Take part in a welcome week activity with other postgraduate students.
- Familiarise yourself with campus.
- Explore what services are available to support you on your learner journey.
- Familiarise yourself with the digital tools you will be expected to use during your studies.
- Take part in a 'wrap up' session, reflect on the week and make sure you know what your timetable is looking like for the first week of teaching.

Personal Welcome Week Checklist

During Welcome Week you need to make sure that you have:



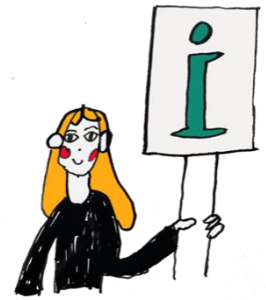
- Completed the enrolment process.
- Collected your student ID card.
- Attended programme activity session.
- Attended some social events on campus/online.
- Attended Freshers' Fayre
- Met with your Programme Director and staff on your programme of study.
- Familiarised yourself with the library and any support services you might need
e.g., Dyslexia or Disability help.



Useful Information

New Students Information

The [Course Joining Information website](#) has lots of useful information to help with your planning. Simply select your level of entry on the website to find out more and access your important joining information.



Student Services

[Student Services](#) provide support and guidance, including mental health, disability support, careers advice, part-time jobs information and money management.

SU Welcome Guide

An interactive guide to help you navigate your journey into and throughout your university life. Take the tour and enjoy each section designed to help you get to know Cardiff Met.

[What you need to know before you go](#)



Academic Calendar 2023/24

[Academic Calendar 2023/2024](#)

Campus Map



Cyncoed Campus

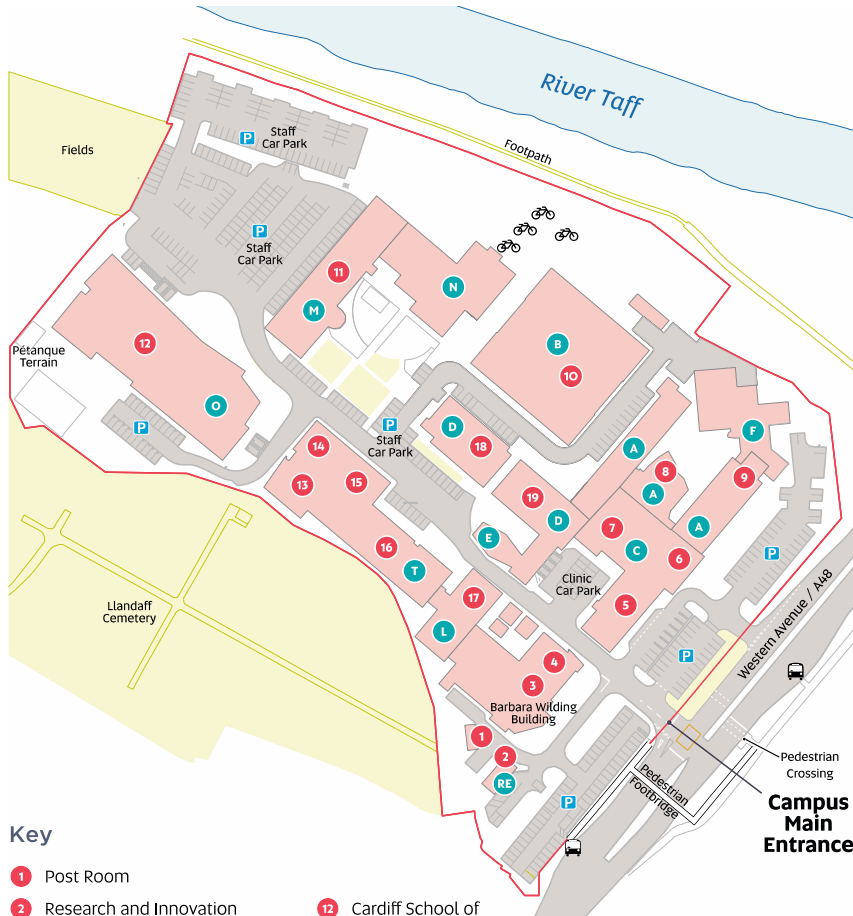


Key

- | | | |
|------------------------------------|----------------------------|---------------------|
| 1 Main Reception and K1 Restaurant | 14 Stuttgart (Halls) | 27 The Bench Cafe |
| 2 Lecture Theatre 4 | 15 Baltimore (Halls) | 28 Russell Rees Gym |
| 3 Learning Centre | 16 Nantes (Halls) | 29 V Block |
| 4 Stradling (Halls) | 17 Queenswood | 30 Syd Arron Gym |
| 5 Herbert (Halls) | 18 Neville (Halls) | 31 The Track Cafe |
| 6 Fitzhamon (Halls) | 19 Sports Hall | 32 i-Zone |
| 7 Bungalow (Halls) | 20 Pool | P Parking |
| 8 College House | 21 Athletes House | 🚲 Bike Rack |
| 9 Thomas House (Halls) | 22 Lecture Theatre 1 and 2 | 🚌 Bus Stop |
| 10 Warwick House and Halls Office | 23 Student Union | |
| 11 Clare (Halls) | 24 Dance Studio | |
| 12 Bute (Halls) | 25 Research House | |
| 13 Ellis (Halls) | 26 Gym Studios | |



Llandaff Campus



Key

- | | | |
|--|-------------------------------------|--|
| 1 Post Room | 12 Cardiff School of Management CSM | P Parking |
| 2 Research and Innovation | 13 IT Help Desk | 🚲 Bike Rack |
| 3 Student Hub | 14 School of Dental Technology | 🚌 Bus Stop |
| 4 Gym (First Floor) | 15 Global Engagement | 2 · City Circle |
| 5 Podiatry | 16 Biomedical Sciences CSSHS | 15 · Heath Hospital to Central Station |
| 6 Main Reception & i-Zone | 17 Learning Centre | |
| 7 Main Halls | 18 Food Industry Centre FIC | |
| 8 Lecture Theatre AO.31 | 19 School of Health Sciences CSSHS | |
| 9 Cardiff School of Technologies CST | | |
| 10 Cardiff School of Art and Design CSAD | | |
| 11 Maritime House | | |

